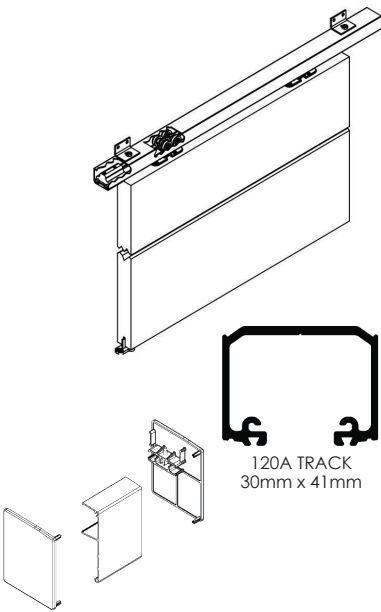


Single Run 120



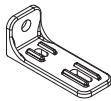
123 FASCIA



91 BRACKET



1SS/250 BRACKET



5SS/120 BRACKET



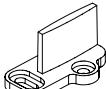
57EN HANGER



58EN HANGER



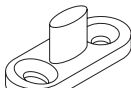
56EN HANGER



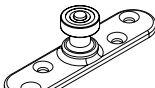
101N GUIDE



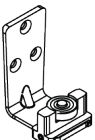
106E/94 GUIDE



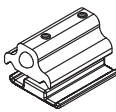
531T GUIDE



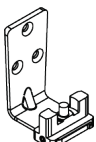
106RB/94 GUIDE



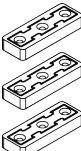
106A/94 GUIDE



120DS DOOR STOP



106AT GUIDE



924-DC

Maximum door weight	120kg
Minimum door thickness	28mm

Sets - includes track and fittings for one door

Description	Code
Kit suitable for one door, kit comprises: 2m length of aluminium track, two standard door hangers, two track mounted door stops, one sawcut guide and installation instructions.	SR120-20/1
Kit suitable for one door, kit comprises: 3m length of aluminium track, two standard door hangers, two track mounted door stops, one sawcut guide and installation instructions.	SR120-30/1

Fittings pack

Description	Code
Fittings pack with all items needed to hang one door (excluding track), pack comprises of two standard door hangers, two door stops, one sawcut guide and installation instructions.	SR120-1PK

Tracks

Description	Code
2m aluminium – anodised finish	120A-A20
3m aluminium – anodised finish	120A-A30
4m aluminium – anodised finish	120A-A40
6m aluminium – anodised finish	120A-A60

Fascia

Description	Code
2m Fascia and end cap set for 120A Track – anodised finish	123-20CA
3m Fascia and end cap set for 120A Track – anodised finish	123-30CA
2m Fascia and end cap set for 120A Track – anodised finish	123-40CA
3m Fascia and end cap set for 120A Track – anodised finish	123-60CA

Brackets - for wall fixing track

Description	Code
Single with fasteners	91
Five pack with fasteners	91/5
Heavy duty bracket – cast stainless steel	1SS/250
Bracket for hanging two lines of track – cast stainless steel	5SS/120

Hangers - for timber doors

Description	Code
Type 57 – surface mounted pressed top plate with nylon wheels and chrome steel bearings	57EN
Type 57 – surface mounted pressed top plate with nylon wheels and stainless steel bearings	57SS/EN
Type 58 – rebated cast top plate with nylon wheels and chrome steel bearings	58EN
Type 58 – rebated cast top plate with nylon wheels and stainless steel bearings	58SS/EN

Hangers - for metal doors

Description	Code
Type 56 – nylon wheels with chrome steel bearings	56EN
Type 56 – nylon wheels with stainless steel bearings	56SS/EN

Guides

Description	Code
Sawcut guide – nylon – floor mounted	101N
Stainless steel sawcut guide	531T
Adjustable guide for multiple panels	106AT
94 Series guide – stainless steel plate and precision bearing	106E/94
94 Series guide – large stainless steel mounting plate and precision bearing	106RB/94
94 Series guide – stainless steel angle plate with adjustable precision bearing	106A/94

Door stops and accessories

Description	Code
Track mounted door stop for Single Run 80 or Single Run 100 door hangers	120DS
Door collector kit	924-DC