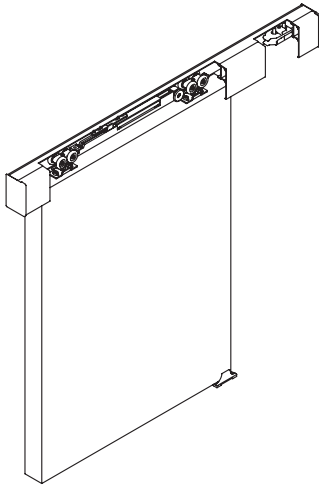
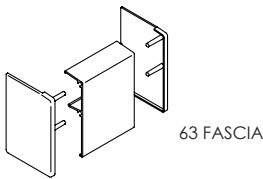


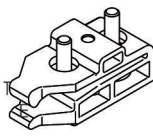
Single Run 60



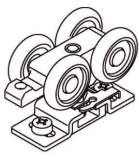
91 BRACKET



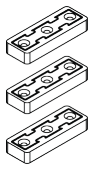
63 FASCIA

60A TRACK
31mm x 30mm

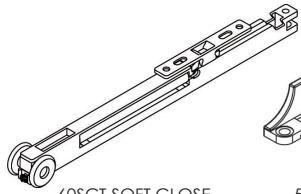
60CS CLIP STOP



607 HANGER



924-DC



60SCT SOFT CLOSE



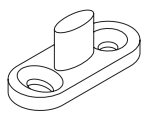
55G GUIDE



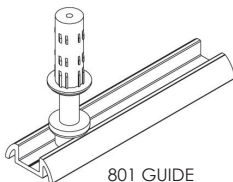
101N GUIDE



287S STOP



V1.1 531T GUIDE



801 GUIDE

Maximum door weight	60kg
Minimum door thickness	19mm

Sets - includes track and fittings for one door

Description	Code
Kit suitable for one door, kit comprises: 2m length of aluminium track, five wall mounting brackets, two door hangers, two track mounted door stops, one surface mounted guide, one sawcut guide, spanner, all screws and installation instructions.	SR60-20/1
Kit suitable for one door, kit comprises: 3m length of aluminium track, five wall mounting brackets, two door hangers, two track mounted door stops, one surface mounted guide, one sawcut guide, spanner, all screws and installation instructions.	SR60-30/1

Fittings pack

Description	Code
Fittings pack with all items needed to hang one door (excluding track), pack comprises of two hangers, two door stops, one surface mounted guide, one sawcut guide, spanner, all screws and installation instructions.	SR60-1PK

Brackets - for wall fixing track

Description	Code
Bracket - single with fasteners	91
Bracket - five pack with fasteners	91/5

Fascia

Description	Code
2m Fascia and end cap set for Single Run 60 - powder coated white	63-20PWT
3m Fascia and end cap set for Single Run 60 - powder coated white	63-30PWT
2m Fascia and end cap set for Single Run 60 - anodised	63-20CA
3m Fascia and end cap set for Single Run 60 - anodised	63-30CA

Components

Description	Code
2m aluminium track - mill finish	60A-20
3m aluminium track - mill finish	60A-30
4m aluminium track - mill finish	60A-40
6m aluminium track - mill finish	60A-60
Single Run 60 Door Hanger	607
Track mounted retaining clip stop	60CS
Soft close unit	60SCT
Floor mounted surface guide - nylon	55G
Sawcut guide - nylon - floor mounted	101N
Track mounted door stop - stainless steel	287S
Spanner for 605 and 606 hanger	805-SPN
1.2m 81 Series guide channel - aluminium - anodised finish	81-A12
1.8m 81 Series guide channel - aluminium - anodised finish	81-A18
2.4m 81 Series guide channel - aluminium - anodised finish	81-A24
3.6m 81 Series guide channel - aluminium - anodised finish	81-A36
4m 92 Series threshold guide channel - aluminium - anodised finish	92-A40
6m 92 Series threshold guide channel - aluminium - anodised finish	92-A60

Alternative door guide systems

Description	Code
Guide for cavity door applications - nylon	155
Surface guide - nylon - wall mounted - adjustable	103WA
Stainless steel sawcut guide	531T
81 or 92 Series spring loaded guide - stainless steel	801S
Door collector kit	924-DC