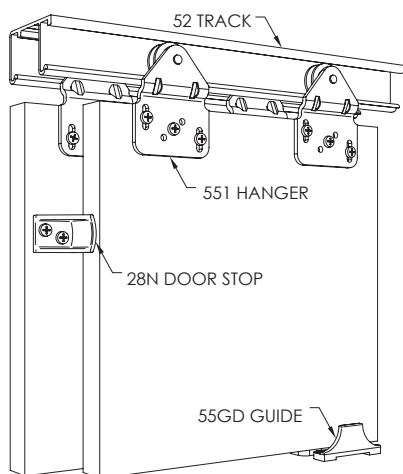


# Wardrobe Double 50



Maximum door weight	50kg
Minimum door thickness	16mm

Sets - include track and fittings for two or three doors

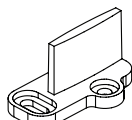
Description	Code
Kit suitable for two doors, comprising: 1.2m length of double run aluminium track, two inner hangers, two outer hangers, two door stops, one double surface mounted guide, two sawcut guides, all screws and installation instructions.	WD50-12/2
Kit suitable for two doors, comprising: 1.5m length of double run aluminium track, two inner hangers, two outer hangers, two door stops, one double surface mounted guide, two sawcut guides, all screws and installation instructions.	WD50-15/2
Kit suitable for two doors, comprising: 1.8m length of double run aluminium track, two inner hangers, two outer hangers, two door stops, one double surface mounted guide, two sawcut guides, all screws and installation instructions.	WD50-18/2
Kit suitable for three doors, comprising: 2.4m length of double run aluminium track, two inner hangers, two outer hangers, two reversible hangers, two door stops, two double surface mounted guides, three sawcut guides, all screws and installation instructions.	WD50-24/3

## Fittings pack

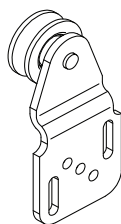
Description	Code
Fittings pack with all items needed to hang two doors (excluding track), pack comprises two inner door hangers, two outer door hangers, one door stop, two sawcut guides, one surface mounted double guide, all screws and installation instructions.	WS50-2PK



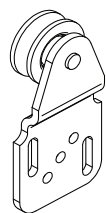
52 TRACK  
28mm x 52mm



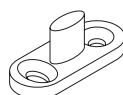
101N GUIDE



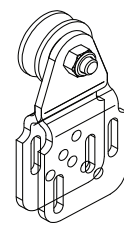
550 HANGER



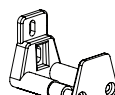
551 HANGER



531T GUIDE



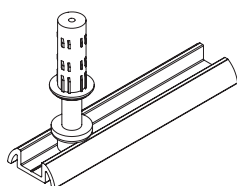
552 HANGER



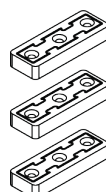
103WA GUIDE



113N/81 GUIDE  
and 81 CHANNEL



801S GUIDE



924-DC

## Components

Description	Code
1.2m Wardrobe Double 50 track	52-12
1.5m Wardrobe Double 50 track	52-15
1.8m Wardrobe Double 50 track	52-18
2.4m Wardrobe Double 50 track	52-24
3m Wardrobe Double 50 track	52-30
3.6m Wardrobe Double 50 track	52-36
4.8m Wardrobe Double 50 track	52-48
Wall mounted nylon door stop	28N
Floor mounted nylon surface guide for bi-passing doors	55GD
Wardrobe Single / Double 50 - Outer hanger	550
Wardrobe Double 50 - Inner hanger	551
Wardrobe Single / Double 50 - Reversible hanger	552
Sawcut guide - nylon - floor mounted	101N

## Alternative door guide systems

Description	Code
Surface guide - nylon - wall mounted - adjustable	103WA
Stainless steel sawcut guide	531T
81 or 92 Series spring loaded guide	801S
81 Series nylon guide (pair)	113N/81
1.2m Series guide channel - aluminium - anodised finish	81-A12
1.8m Series guide channel - aluminium - anodised finish	81-A18
2.4m Series guide channel - aluminium - anodised finish	81-A24
3.6m Series guide channel - aluminium - anodised finish	81-A36
4m 92 Series threshold guide channel - aluminium - anodised finish	92-A40
6m 92 Series threshold guide channel - aluminium - anodised finish	92-A60
Door collector kit	924-DC