

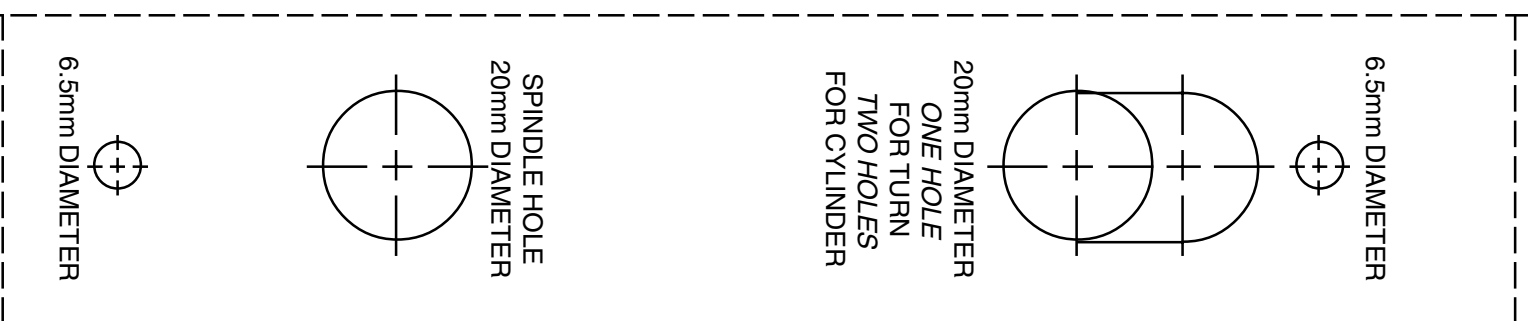
23mm Backset
30mm Backset
38mm Backset



MORTICE CENTRELINE



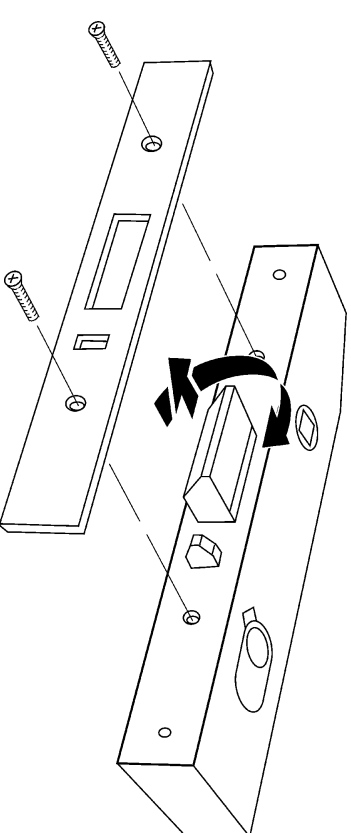
23mm Backset
30mm Backset
38mm Backset



MORTICE DEPTHS
23mm Backset = 44mm
30mm Backset = 51mm
38mm Backset = 59mm

	RIGHT HAND DOOR	LEFT HAND DOOR
OPENING IN		
OPENING OUT		
OUTSIDE	OUTSIDE	OUTSIDE

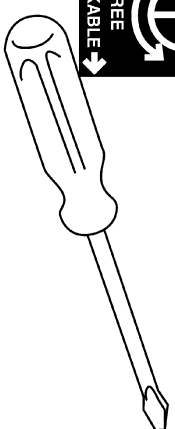
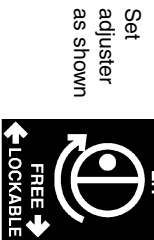
- TO REVERSE BOLT**
1. REMOVE FOREND
 2. FOR EXTENDED BACKSETS REMOVE EXTENSION PACKER
 3. PULL & ROTATE BOLT THROUGH 180° CLOCKWISE



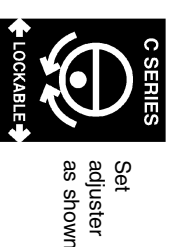
995 HANDING/FUNCTION ADJUSTMENT

V SERIES HANDING ADJUSTMENT
(Inside handle free)

To set for left hand
Push in and turn clockwise



To set for C SERIES
(Both handles lockable)



To set for right hand
Push in and turn anti-clockwise

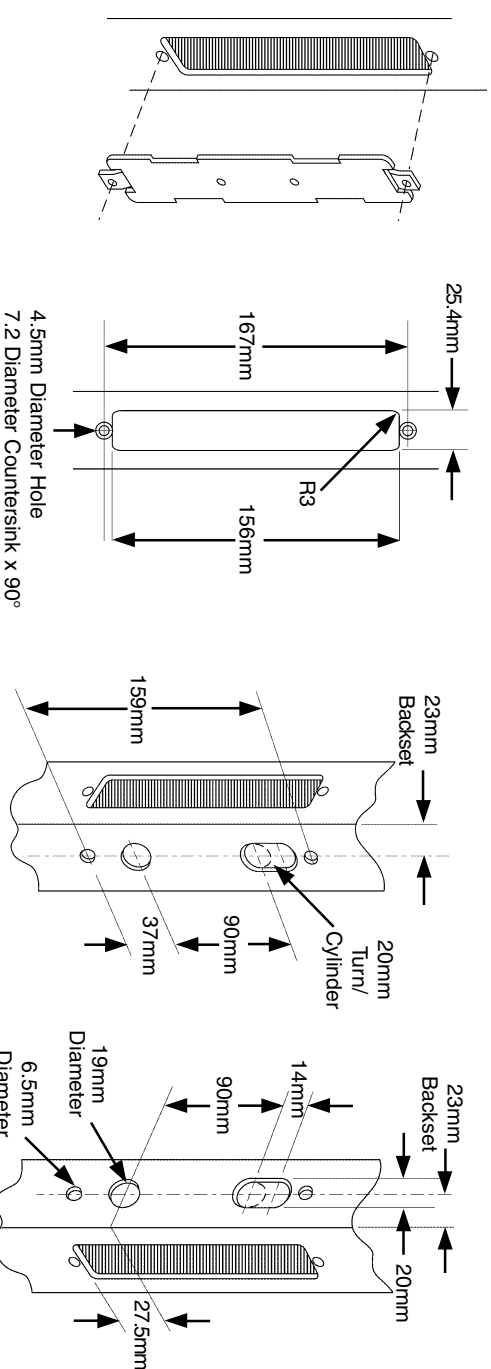
NOTE: ENSURE LOCKING BAR IS IN THE UNLOCKED POSITION.

IMPORTANT

A MAXIMUM CLEARANCE OF 5mm IS RECOMMENDED BETWEEN LOCK FOREND AND STRIKER PLATE FOR SECURITY REASONS.
995 LOCKS & LATCHES ARE DESIGNED FOR USE WITH SPRUNG DOOR FURNITURE. THE USE OF UNSPRUNG DOOR FURNITURE IS NOT RECOMMENDED.

Metal Door Preparation

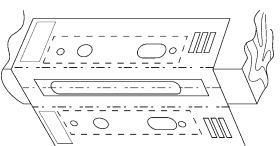
1. Establish required height of the lockset on the door
2. Cut window for forend 156mm x 25.4mm with a 3mm radii
3. Place template in opening. Drill 4.5mm diameter holes with a countersink of 7.2mm diameter x 90°.
4. Drill appropriate holes for the selected lockset.



Wooden Door Preparation

1. Establish required height of lockset on the door.
2. Cut mortise slot, using template for the appropriate backset.
3. Fit lock into mortise, scribe around forend and remove wood to allow flush fit to door.
4. Remove lock and use template to mark and drill holes to suit lock and furniture being used.

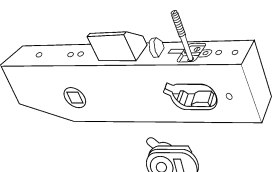
NOTE:
DO NOT DRILL HOLES RIGHT THROUGH DOOR. THE FURNITURE MAY NOT COVER ANY HOLES THAT ARE INCORRECTLY DRILLED.



Turn Adapter

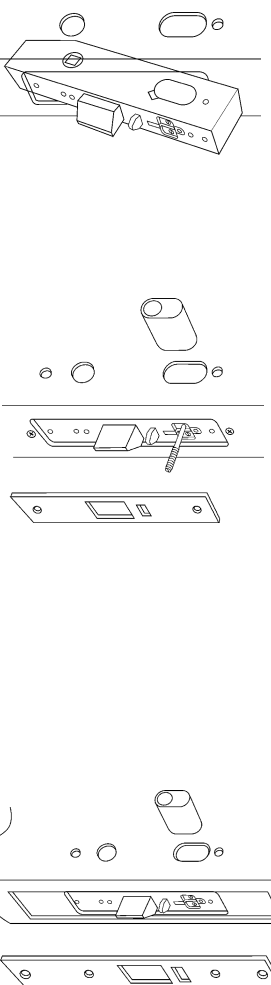
1. Remove retaining screw from the side that the adapter is to be fitted.
2. Insert adapter and secure with retaining screw.

NOTE:
TURN ADAPTER ROTOR IS REQUIRED TO BE ENGAGED IN THE YOKE OF THE LOCKING BAR



Install Lock

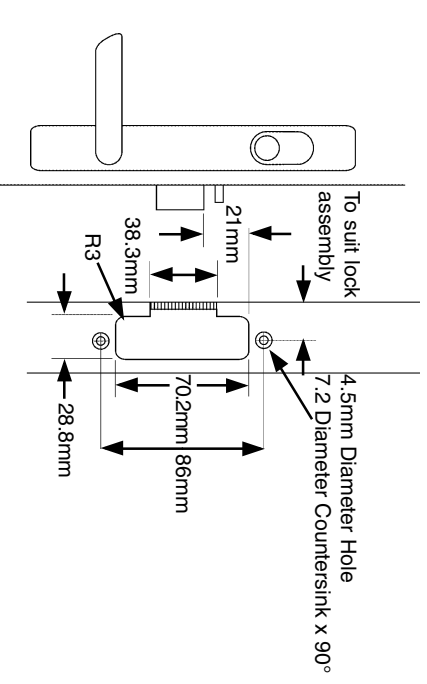
1. Insert lock into door and secure
2. If cylinders are required to be fitted, remove retaining screw from the side that the cylinder is to be fitted.
3. Insert cylinder and secure with retaining screw.
4. Secure forend.



Install Strike

METAL DOORS

1. Prepare door jamb cutout.
2. Fit strike box to frame.
3. Fit strike to strike box.



WOODEN DOORS

1. Mark door frame for strike.
2. Remove wood so strike sits flush with frame.
3. Mortise 15mm deep recess for bolt.
4. Optional - Mortise out for plastic strike box.
5. Secure strike to frame.

