








WINDOW HANDLE FRONT FIXING

PROFESSIONAL SERIES

CONTENTS

- 1 x Avon locking right-handed window handle
- 6 x Timber screws
- 1 x Key
- 2 x Screw covers
- 1 x Casement / awning strike
- 1 x Installation instructions

TOOLS REQUIRED

-  Drill
-  3.5mm drill bit
-  #2 pozi screwdriver
-  Marker pen
-  Safety goggles

MC896W
025085 1217



9 414553 1961007

ASSA ABLOY New Zealand
6 Armstrong Road, Albany,
Auckland 0632, New Zealand

Quality, ISO 9001
Environmental, ISO 14001

For customer feedback:
nzsales@assaabloy.com



PLEASE
RECYCLE

Yale The world's favourite lock
www.yalelock.co.nz

An ASSA ABLOY Group brand

ASSA ABLOY

MC896W (White)
MC896BR (Brown)



WINDOW HANDLE FRONT FIXING

PROFESSIONAL
SERIES

AVON LOCKING RIGHT HANDED PUSH BUTTON LOCK

Suitable for timber



Suitable
for awning



Suitable
for casement



Easy
install



Instructions
included



Made in
New Zealand

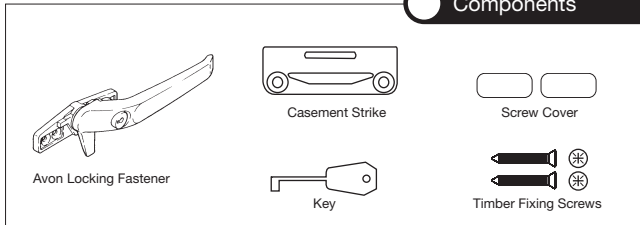


Avon Locking Fastener

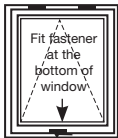
for casement and awning windows

Avon Locking Fastener MC896: For timber windows.
Operation: Push button to lock, use the key to unlock.

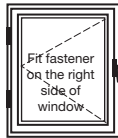
Components



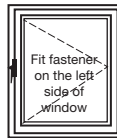
Identify Window Type



Awning Windows



Right Handed Casement Windows



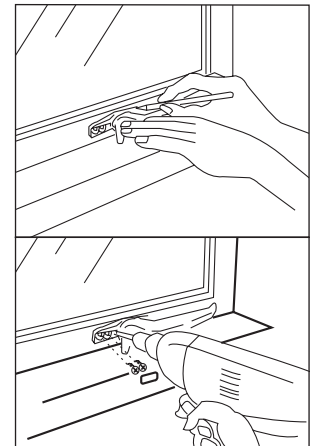
Left Handed Casement Windows

Fixing Instructions

1

Fitting handle

Select position for handle on window allowing 5mm clearance between the bottom of the handle tongue and the window sill. Mark screw positions, drill 3.5mm diameter pilot holes. Fix handle in position.



2

Fitting strike

Select location for strike to suit position of handle by fully closing window and sliding strike into position. Lift handle and mark screw positions for strike. Drill 3.5mm diameter pilot holes and screw strike in position. Test operation.



When window is fully closed and Avon is in locked or unlocked mode, window sash should be tightly held against frame.

